

Configure Student Office365 Multi-Factor Authentication Registration Instructions

- [Instructional Video](#)
- [Getting Started](#)
- [Starting the Process](#)
- [Signing In on the Desktop Computer or iPad](#)
- [Downloading and Installing the Microsoft Authenticator App on your iPhone/Android device](#)
- [Setting up the Microsoft Authenticator App on your iPhone/Android device](#)
- [Syncing the Microsoft Authenticator App to your iPhone/Android device](#)
- [Verifying the Microsoft Authenticator App](#)
- [Completing the Initial Registration Process](#)
- [Adding alternative authentication devices](#)
- [Adding a phone for authentication](#)
- [Deleting a device](#)

Instructional Video

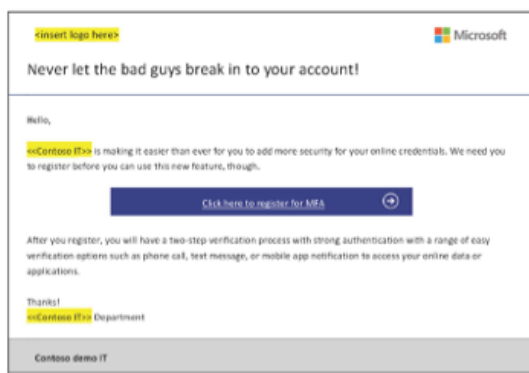
[Instructional Video](#)

Getting Started

- IT recommends that users complete their enrollment using a desktop computer or iPad.
- Users will need to have their iPhone or Android phone with them and be able to download apps, to complete the process.
- Users should make sure they are connected to the internet and have their Lynn University email address and password ready to log in.

Starting the Process

- Users should receive an email from Lynn University with a link to begin the registration process. If so, click the blue “Click Here to Register for MFA” button.



Signing In on the Desktop Computer or iPad

- The Microsoft Sign-in Screen will appear.
- Users should enter their Lynn University Email Address and click Next. (Ex. user@email.lynn.edu or user@lynn.edu)



Sign in

Email, phone, or Skype

No account? [Create one!](#)

[Can't access your account?](#)

[Sign-in options](#)

Next

- Next, the Lynn University sign-in screen will appear.
- Users should enter their Lynn University Account password and click Sign In.



LYNN
UNIVERSITY

Sign in with your Lynn email account.
Make sure to include your full email address
jdoe@email.lynn.edu (For Students) or
jdoe@lynn.edu (For Staff/Faculty)

Sign in

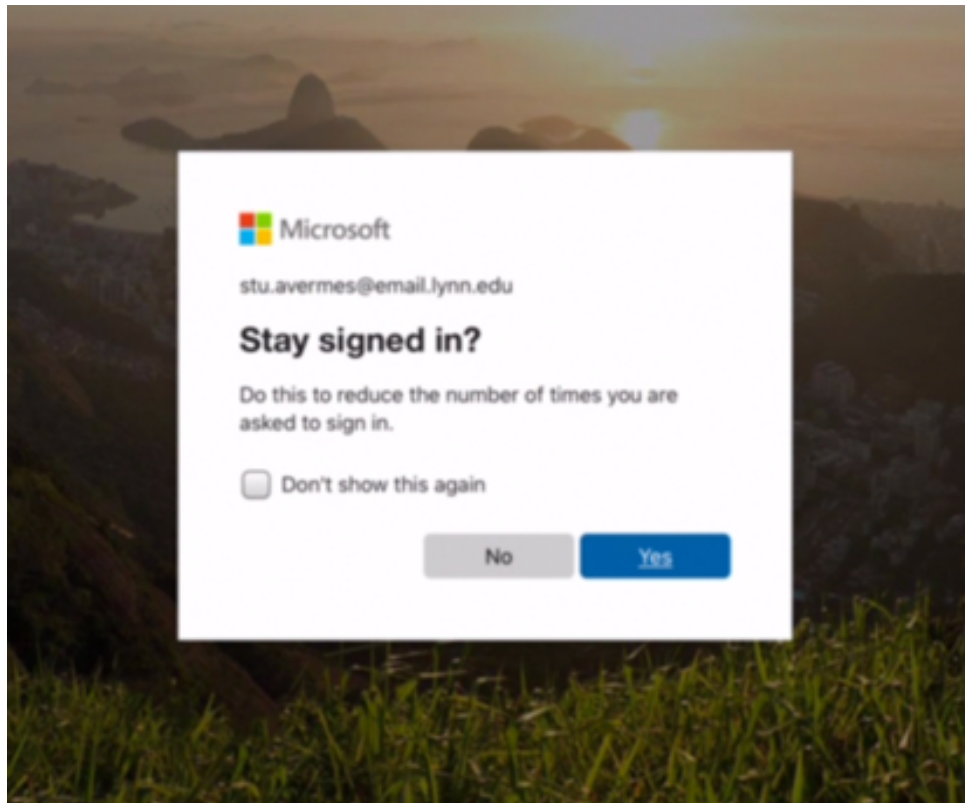
For security reasons, please Logout and close your web browser when you are done accessing services that require authentication!

[Reset Password](#) [Student Staff/Faculty](#)

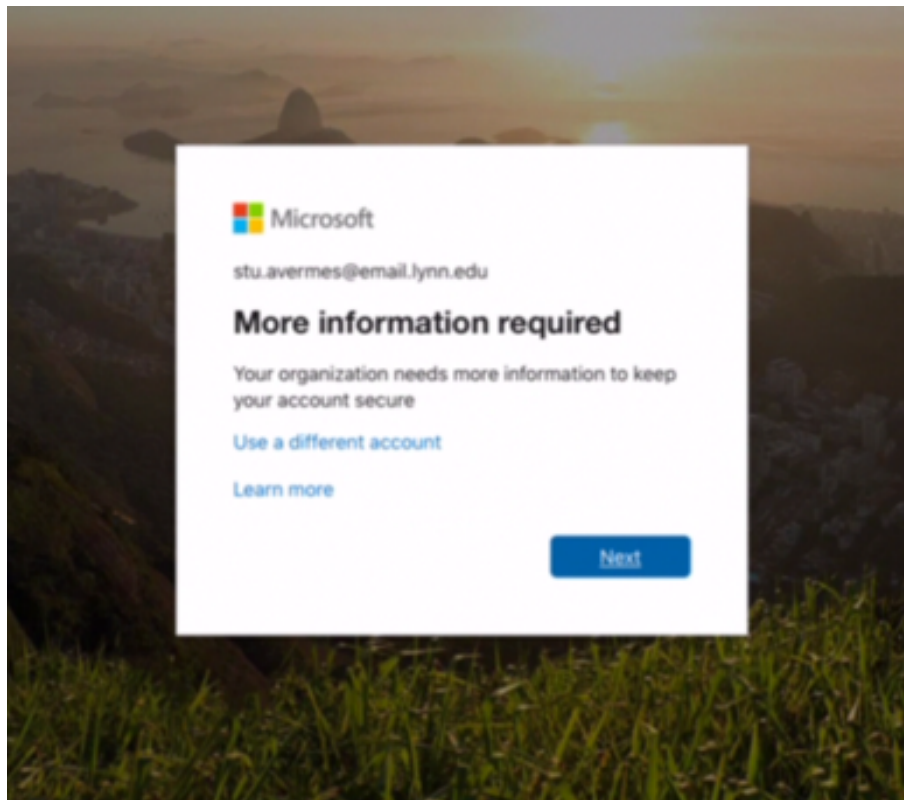
Need Help ?
Call 561-237-7979
[IT Support Services](#)

© 2018 Microsoft

- On the next screen, users can select whether to stay signed in on the device they are using.
- If the user is registering on a public device, they should not remain signed in.

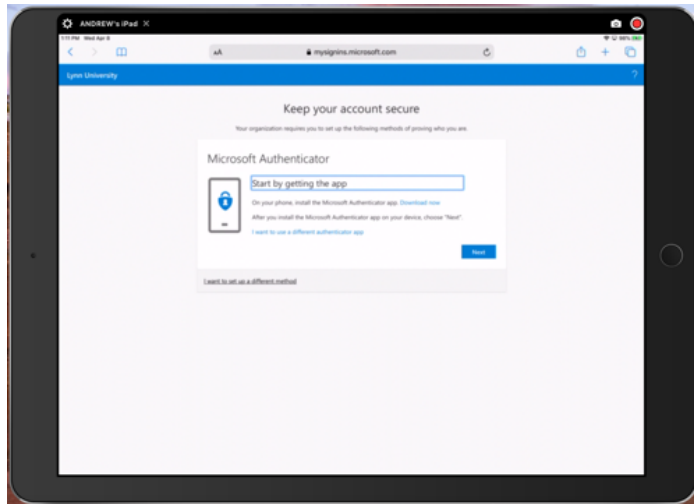


- The next screen is the first step in the registration process.
- Click on Next to continue.

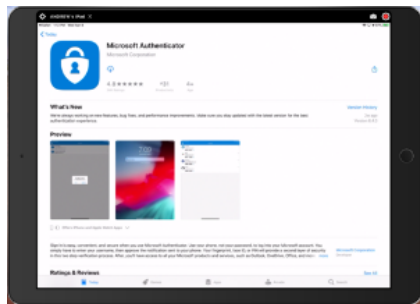


Downloading and Installing the Microsoft Authenticator App on your iPhone/Android device

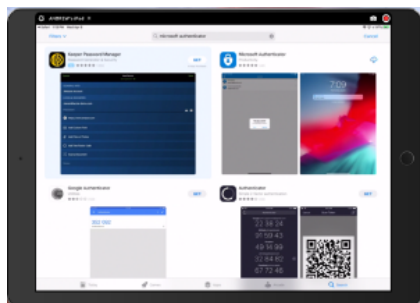
- Before users can continue through the process, they must download the Microsoft Authenticator App on their secondary device.
- Lynn University-issued iPad users can go to the Self-Service app to download the app



- Users who can click on the “Download now” link on their secondary device will be taken to the App Store on their device and be able to download the app.

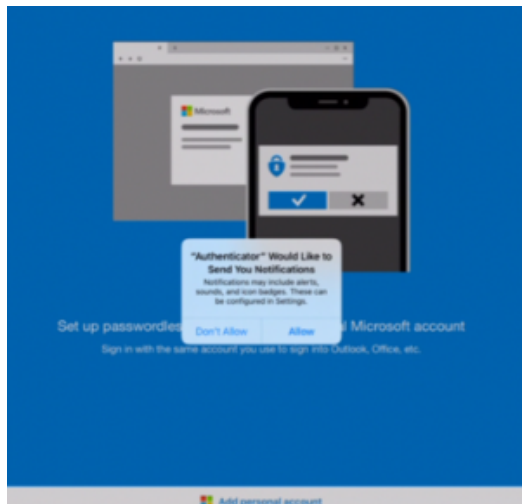


- If users cannot click the link, they may go to the App Store and search for Microsoft Authenticator.
- Once found users should download the app.

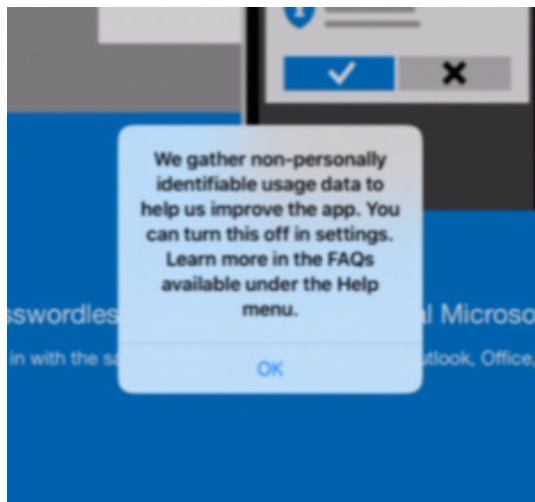


Setting up the Microsoft Authenticator App on your iPhone/Android device

- Once the download is complete, launch the app.
- The App may ask you to approve Push Notifications.
- This is essential to allow as users will get pushes to Approve or Deny when logging in.



- A notice may appear explaining the app's data usage policy.
- After reading, press OK.



- Once the app has been installed and is ready for use, go back to your ipad/desktop
- For the "How should we contact you?" question, click or tap on the drop down menu and choose Mobile App.
- Click on the blue Set Up button



Additional security verification

Secure your account by adding phone verification to your password. [View video to know how to secure your account](#)

Step 1: How should we contact you?

Authentication phone

Authentication phone
Office phone
Mobile app

Method

☐ Send me a code by text message

☒ Call me

Next

Your phone numbers will only be used for account security. Standard telephone and SMS charges will apply.

- Select "Receive Notifications for Verification".
- Click on the blue "Set Up" button .



Additional security verification

Secure your account by adding phone verification to your password. [View video to know how to secure your account](#)

Step 1: How should we contact you?

Mobile app

How do you want to use the mobile app?

- ☒ Receive notifications for verification
- ☐ Use verification code

To use these verification methods, you must set up the Microsoft Authenticator app.

Set up

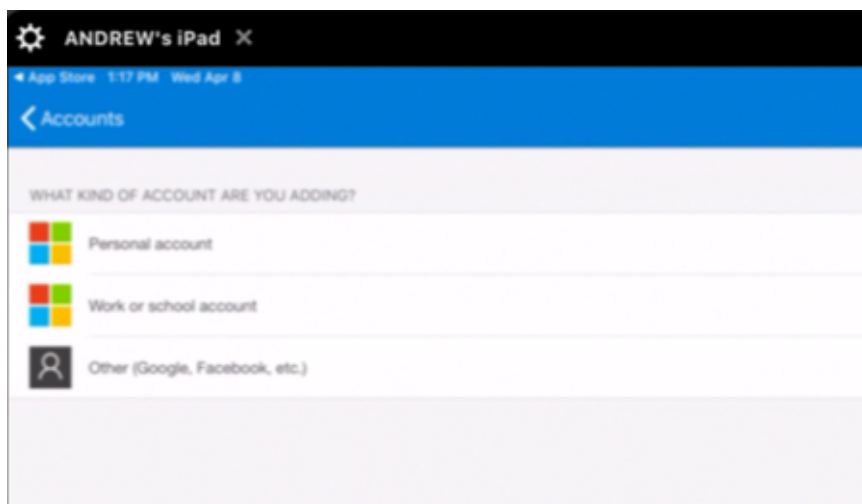
Mobile app has been configured for notifications and verification codes.

Next

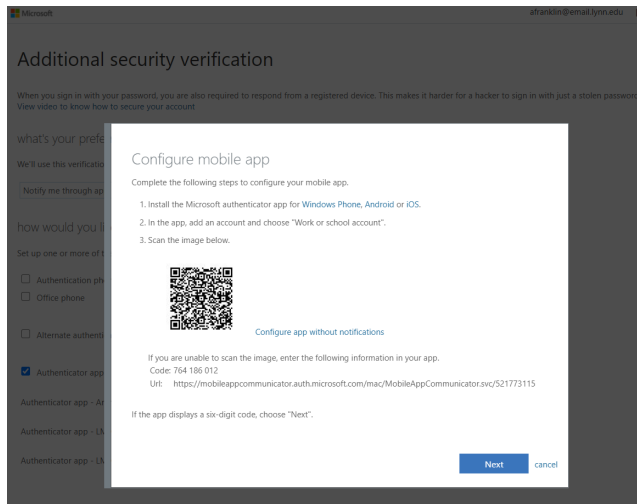
©2020 Microsoft Legal | Privacy

Syncing the Microsoft Authenticator App to your iPhone/Android device

- Press the "Add Account" button in the middle of the screen.
- Select the "Work or School Account" option on the next screen.
- If prompted, click OK to allow the app to use the device's camera.



- Once the app is ready, click Next on the desktop or iPad device.
- The following page, displayed on the desktop or iPad, will have a QR code that users can scan to sync the app.

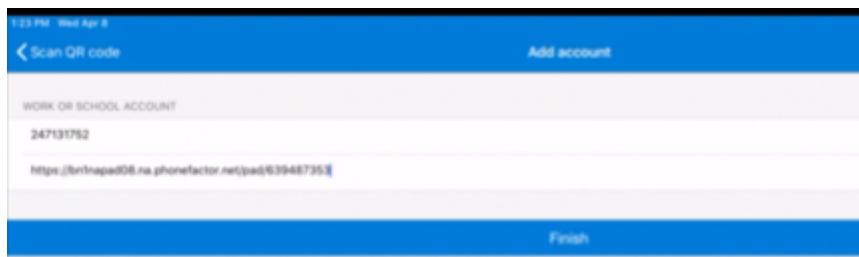


- Hold the iPhone/Android's camera up to the QR code.
- When the scan has completed, the image will freeze, and a rotating wheel will appear.
- If users are unable to use their iPhone/Android's camera, they can select to Enter a Code manually.

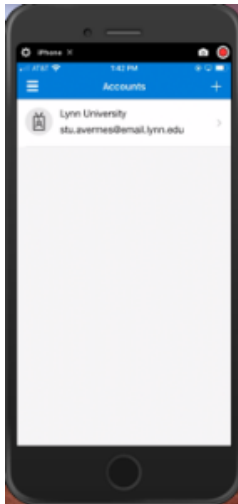


- The manual entry code and URL can be found on the QR code page on the desktop or iPad device.

- Copy and paste or enter the manual code and URL into the appropriate places on the App.



- Once the code has been scanned or entered successfully, users will see the Lynn University account listed on the app on their iPhone/Android device.



Verifying the Microsoft Authenticator App

- Once the app account has been created, go back to the registration screen on the desktop or iPad device, and click Next.
- The app will then send a test push-notification to the app on the iPhone/Android device that must be approved or denied.



afranklin@email.lynn.edu |

Additional security verification

Secure your account by adding phone verification to your password. [View video to know how to secure your account](#)

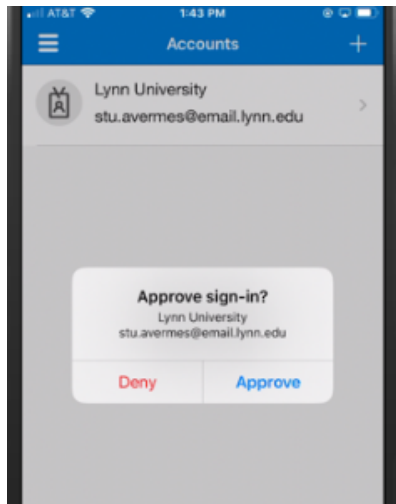
Step 2: Let's make sure that we can reach you on your Mobile App device



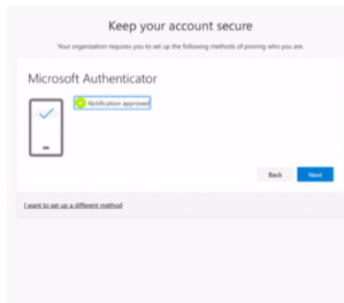
Please respond to the notification on your device.

Next

- On the app, a pop-up window will appear that gives the user the option to approve or deny a sign-in attempt.
- For account security purposes, it is critical that users do not approve login attempts that may be fraudulent. (If you didn't do it, don't approve it!!!)




- When the push notification has been approved, the registration screen on the desktop or iPad device will show that the verification has been approved.
- Click Next.



Completing the Initial Registration Process

- The site will ask for additional security verification, in the case you lose access to your app. Input your phone number here.
- if it doesn't work, refresh the page,

Microsoftafranklin@email.lynn.edu | ?

Additional security verification

Secure your account by adding phone verification to your password. [View video to know how to secure your account](#)

Step 3: In case you lose access to the mobile app

United States (+1)

Done

Your phone numbers will only be used for account security. Standard telephone and SMS charges will apply.

©2020 Microsoft

Legal

Privacy

Adding alternative authentication devices

- IT recommends that users set up at least two (2) authentication devices. (For example, if you are completing this on your desktop computer, you can set up an iPad as a 2nd authentication device)
- On the desktop or iPad device, the Security Info option will load after completing the initial registration.
- Here, users will add additional devices for authentication.



afranklin@email.lynn.edu | ?

Additional security verification

When you sign in with your password, you are also required to respond from a registered device. This makes it harder for a hacker to sign in with just a stolen password.
[View video to know how to secure your account](#)

what's your preferred option?

We'll use this verification option by default.

Notify me through app ▼

how would you like to respond?

Set up one or more of these options. [Learn more](#)

<input type="checkbox"/> Authentication phone	Select your country or region ▼	<input type="text"/>
<input type="checkbox"/> Office phone	Select your country or region ▼	<input type="text"/>
	Extension	<input type="text"/>
<input type="checkbox"/> Alternate authentication phone	Select your country or region ▼	<input type="text"/>

☒ Authenticator app or Token

Set up Authenticator app

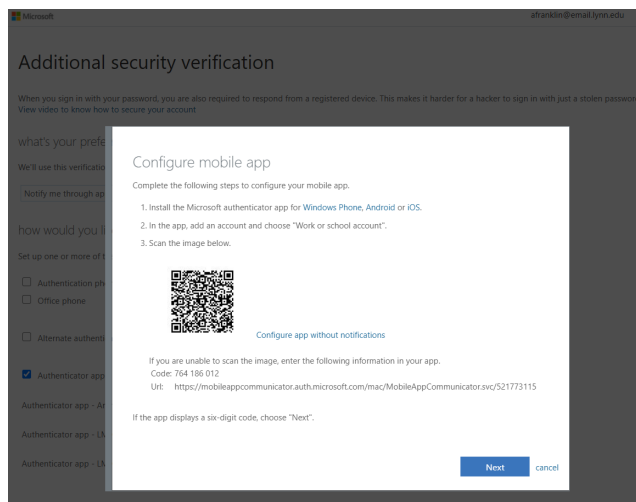
Authenticator app - Anthony's iPad

Delete

Authenticator app - LM-Q710(FGN)

Delete

- To add another device, click on the blue "Set up Authenticator app" button.
- A QR code will appear on screen. Download the Authenticator App on your other device and get to the QR Code Scanning screen

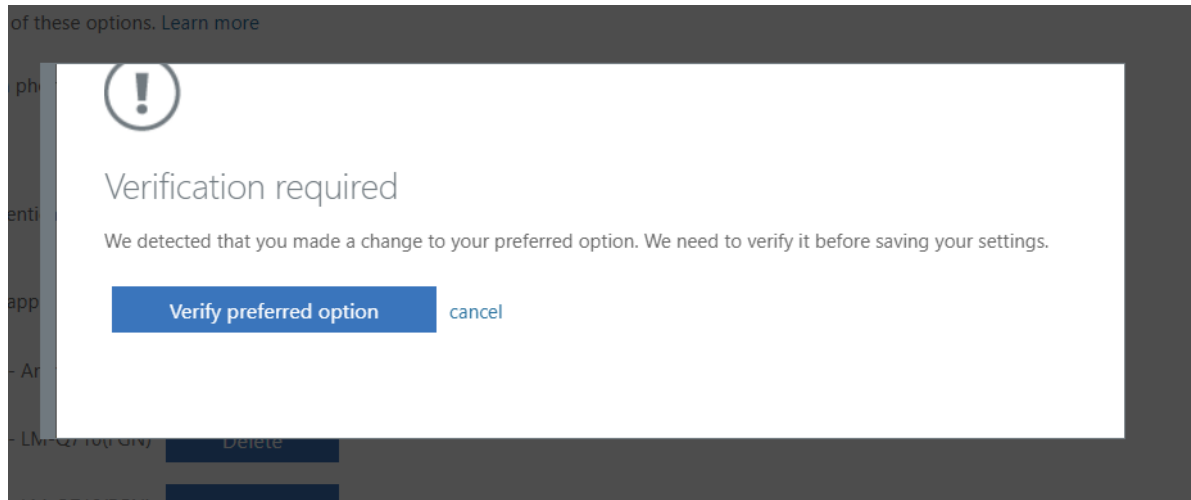


- Scan the code and hit next on your desktop. Your Secondary device is now added

- Users can also add a phone as an authentication option
 - SMS text messages with codes can be used.
 - Phone calls with codes can be received.
- To add this type of device, click the checkbox for Authentication Phone.

Adding a phone for authentication

- Users will select a Country Code and enter their 10-digit phone number
- The site will ask for verification. It should send you a push notification to the Authenticator App.



- The list will now show all devices set up for authentication.

Deleting a device

- When users get a new device or replace their device, they will need to delete the old device associated with Microsoft Authenticator and add the new device.
- To delete a device, go back to <https://aka.ms/mfasetup>
- Under the check box for Authenticator App or Token, is a list of your devices.
- Hit delete on the device you'd like to disconnect

